



Current Data Parameters

NAME NSC-818433-K1
EXPNO 1
PROCNO 1

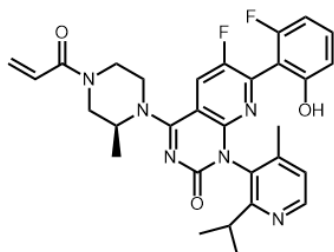
F2 - Acquisition Parameters

Date_ 20190815
Time_ 12.05 h
INSTRUM spect
PROBHD z104450_0348 (
PULPROG zg30
TD 65536
SOLVENT DMSO
NS 64
DS 2
SWH 8223.685 Hz
FIDRES 0.250967 Hz
AQ 3.9845889 sec
RG 161
DW 60.800 usec
DE 6.50 usec
TE 299.6 K
D1 1.00000000 sec
TD0 1
SFO1 400.1324710 MHz
NUC1 1H
P0 4.93 usec
P1 14.79 usec
PLW1 9.92000008 W

F2 - Processing parameters

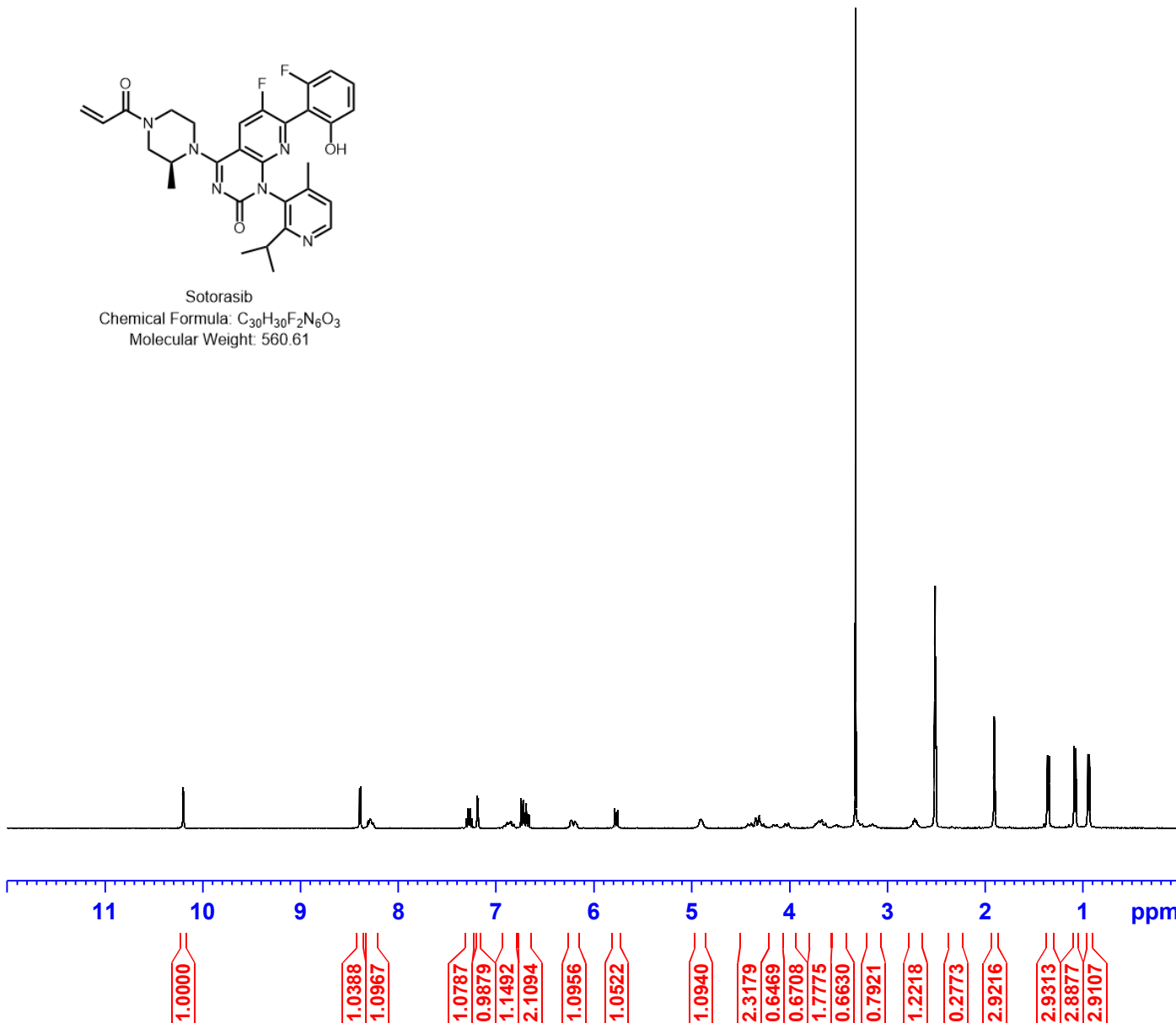
SI 32768
SF 400.1300008 MHz
WDW no
SSB 0
LB 0 Hz
GB 0
PC 1.00

10.196
10.193
8.392
8.380
8.305
8.281
8.250
7.300
7.279
7.261
7.241
7.188
7.176
6.882
6.871
6.856
6.840
6.740
6.719
6.706
6.683
6.661
6.230
6.187
5.781
5.775
5.755
5.749
4.897
4.338
4.304
3.694
3.659
3.316
3.292
2.726
2.710
2.693
2.511
2.506
2.502
2.497
2.493
1.898
1.355
1.338
1.081
1.065



Sotorasib

Chemical Formula: C₃₀H₃₀F₂N₆O₃
Molecular Weight: 560.61



10.196
10.193

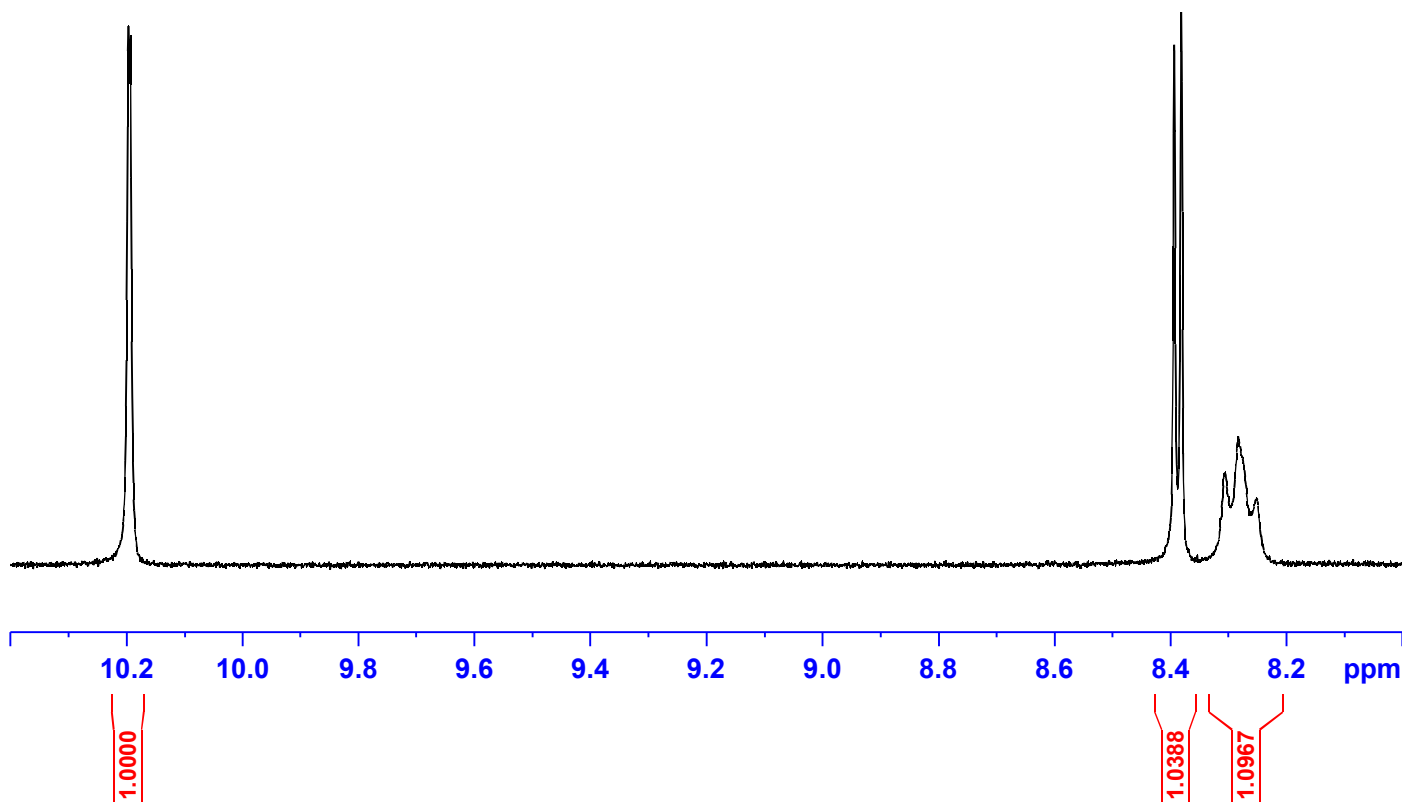
8.392
8.380
8.305
8.281
8.250



Current Data Parameters
NAME NSC-818433-K1
EXPNO 1
PROCNO 1

F2 - Acquisition Parameters
Date_ 20190815
Time 12.05 h
INSTRUM spect
PROBHD Z104450_0348 (
PULPROG zg30
TD 65536
SOLVENT DMSO
NS 64
DS 2
SWH 8223.685 Hz
FIDRES 0.250967 Hz
AQ 3.9845889 sec
RG 161
DW 60.800 usec
DE 6.50 usec
TE 299.6 K
D1 1.00000000 sec
TD0 1
SFO1 400.1324710 MHz
NUC1 1H
P0 4.93 usec
P1 14.79 usec
PLW1 9.92000008 W

F2 - Processing parameters
SI 32768
SF 400.1300008 MHz
WDW no
SSB 0
LB 0 Hz
GB 0
PC 1.00



7.300
7.279
7.261
7.241
7.188
7.176

6.882
6.871
6.856
6.840
6.740
6.719
6.706
6.683
6.661

6.230
6.187

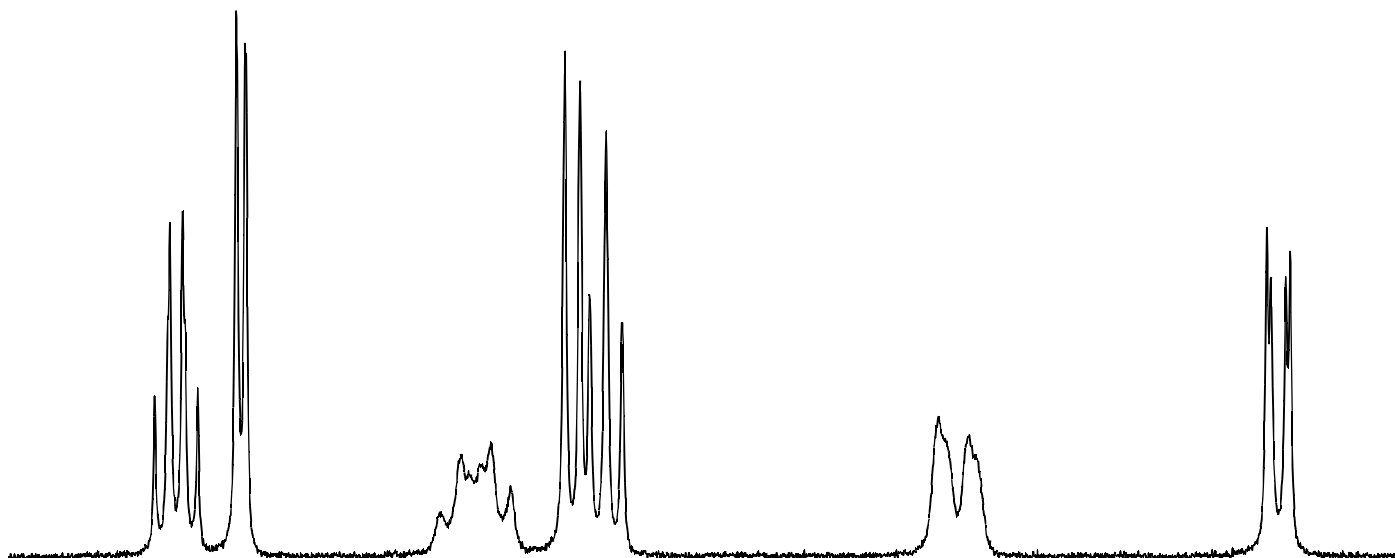
5.781
5.775
5.755
5.749



Current Data Parameters
NAME NSC-818433-K1
EXPNO 1
PROCNO 1

F2 - Acquisition Parameters
Date_ 20190815
Time 12.05 h
INSTRUM spect
PROBHD Z104450_0348 (
PULPROG zg30
TD 65536
SOLVENT DMSO
NS 64
DS 2
SWH 8223.685 Hz
FIDRES 0.250967 Hz
AQ 3.9845889 sec
RG 161
DW 60.800 usec
DE 6.50 usec
TE 299.6 K
D1 1.00000000 sec
TD0 1
SFO1 400.1324710 MHz
NUC1 1H
P0 4.93 usec
P1 14.79 usec
PLW1 9.92000008 W

F2 - Processing parameters
SI 32768
SF 400.1300008 MHz
WDW no
SSB 0
LB 0 Hz
GB 0
PC 1.00



7.4 7.3 7.2 7.1 7.0 6.9 6.8 6.7 6.6 6.5 6.4 6.3 6.2 6.1 6.0 5.9 5.8 ppm

1.0787

0.9879

1.1492

2.1094

1.0956

1.0522

— 4.897

— 4.338
— 4.304

— 3.694
— 3.659

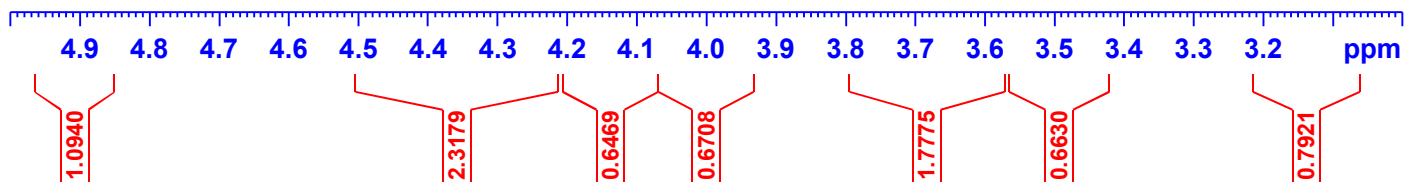
— 3.316
— 3.292



Current Data Parameters
NAME NSC-818433-K1
EXPNO 1
PROCNO 1

F2 - Acquisition Parameters
Date_ 20190815
Time 12.05 h
INSTRUM spect
PROBHD Z104450_0348 (
PULPROG zg30
TD 65536
SOLVENT DMSO
NS 64
DS 2
SWH 8223.685 Hz
FIDRES 0.250967 Hz
AQ 3.9845889 sec
RG 161
DW 60.800 usec
DE 6.50 usec
TE 299.6 K
D1 1.00000000 sec
TD0 1
SFO1 400.1324710 MHz
NUC1 1H
P0 4.93 usec
P1 14.79 usec
PLW1 9.92000008 W

F2 - Processing parameters
SI 32768
SF 400.1300008 MHz
WDW no
SSB 0
LB 0 Hz
GB 0
PC 1.00





Current Data Parameters
NAME NSC-818433-K1
EXPNO 1
PROCNO 1

F2 - Acquisition Parameters
Date_ 20190815
Time 12.05 h
INSTRUM spect
PROBHD Z104450_0348 (
PULPROG zg30
TD 65536
SOLVENT DMSO
NS 64
DS 2
SWH 8223.685 Hz
FIDRES 0.250967 Hz
AQ 3.9845889 sec
RG 161
DW 60.800 usec
DE 6.50 usec
TE 299.6 K
D1 1.00000000 sec
TD0 1
SFO1 400.1324710 MHz
NUC1 1H
P0 4.93 usec
P1 14.79 usec
PLW1 9.92000008 W

F2 - Processing parameters
SI 32768
SF 400.1300008 MHz
WDW no
SSB 0
LB 0 Hz
GB 0
PC 1.00

